



INSTITUTE OF TRANSPORTATION ENGINEERS

SOUTHERN CALIFORNIA SECTION

NEWSLETTER

2019 – 2020, Issue No. 1

August-September 2019

President's Message

Sowmya Chandrasekhar, PE, TE, PTOE



It has been such an honor to serve on the Section Board the last three years and I am really excited to serve as the President this new ITE year! Please help me welcome the newly elected Treasurer, **Marc Violett**, to the Board. Welcome Marc! We also have **Ed Alegre** as Vice President, **Dina Saleh** as Treasurer, **Josh McNeill** as First Past President, and **Dean Lehman** as Second Past President – who have contributed immensely to our Section and will continue to lead us as Board Members this year. I will also like to take this opportunity to thank all Chairs for the time they have dedicated to the Section in helping it run successfully. We have a new chair joining our team this year. Please welcome **Kenny Pham** as our Social Media Administrator. He will be

managing our social media accounts at [LinkedIn](#), [Facebook](#), [Twitter](#), and [Instagram](#). If you haven't already, please connect with us on these Social Media platforms to stay up-to-date with our section and industry news.

It was great to see so many of our Section members at the Western District Annual Meeting in Monterey, California, and the International Annual Meeting in Austin, Texas. Two of our Section Past Presidents, **Neelam Dorman** and **Giancarlo Ganddini**, were elected to serve as the Western District President and Vice President, respectively, for the term June 2019 to December 2020. Congratulations, Neelam and Giancarlo! We were excited to see **Zaki Mustafa** receive the (very well deserved) Western District Lifetime Achievement Award. Congratulations, Zaki!

Congratulations are also in order for YOU, our section member, as without your engagement and support we wouldn't have had such a great year with such well attended events and activities. As a testament for which, our Section was presented the Western District and International Section/Chapter Activity Awards! The 2018 Sections Activities Report submitted for this award category can be found [HERE](#). The press release from ITE International is included on Page 3 of this newsletter.

This year, we have also opted for a few changes which includes issuing bi-monthly newsletters in lieu of the nine newsletters issued yearly (more details on Page 6). We have also updated our sponsorship package to include a new Diamond Package. Only two diamond packages will be available every year – 1 consultant and 1 vendor. We would like to thank our diamond consultant sponsor of the year, **Advantec Consulting Engineers**. Please check out the details of our new sponsorship package on Page 8 and reach out to our sponsorship chairs or any board members. We will also like to thank our August-September newsletter sponsors – **Iteris** and **Etherwan**.

We have already kicked off this year with a very successful Summer Mixer at the LA Police Academy Rock Garden. Thanks to our continued event sponsor for the past several years, **Kimley-Horn and Associates**. Our next meeting will be on September 18th, at the Luminarias Restaurant in Monterey Park. **Tim Lindholm**, LA Metro Senior Executive Officer, will be our speaker giving an overview of Metro's Capital Projects as part of Measure R and M. I look forward to seeing you next week!

Upcoming ITE SoCal Event

Regular ITE Meeting

Wednesday, September 18

11:30 am to 1:00 pm

Luminarias Restaurant

*See Calendar for all 2019-2020 Events, and
Flyer for September Event Registration Link*

Inside This Issue

Scribe Report – *Pg.3*

Installation of Section Officers – *Pg.3*

SoCal Section Wins Section/Chapter
Activities Award from ITE – *Pg.3*

Addressing 9 Grand Transportation
Challenges in the West – *Pg. 4*

Legislative Analysis – *Pg.5*

Update from ITE Headquarters – *Pg.6*

Planning Ahead for our Next Four
Newsletters – *Pg.6*

Brief Look Ahead

2019

- November 6th-8th, Cascadia Rail Summit, Microsoft Campus, Redmond WA, www.ushsr.com/events/seattle2019.html

2020

- April 3rd, California Infrastructure Symposium, Doubletree Hotel Arden West, Sacramento, www.caisregion9.org
- June 28th-July 1st, Western District Annual Meeting, Hilton Hawaiian Village, Honolulu HI, www.westernite.org
- August 9th-12th, ITE International Annual Meeting & Exhibit, New Orleans LA, www.ite.org

2019-2020 Southern California Section Board

President

Sowmya Chandrasekhar
Kimley-Horn, Inc.
sowmya.chandrasekhar@kimley-horn.com



Vice-President

Ed Alegree
LA Metro
alegree@metro.net



Secretary

Dina Saleh
LA Metro
salehd@metro.net



Treasurer

Marc Violett
Michael Baker International
marc.violett@mbakerintl.com



First Past President

Josh McNeill
Iteris, Inc.
jmcneill@iteris.com



Second Past President

Dean Lehman
County of Los Angeles
dlehman@ceo.lacounty.gov



2018-2019 Southern California Section Chairs

Sponsorship Coordinators

Emilio Murga
Albert Grover & Associates
emilio@albertgrover.com



Meghavardhan Govindu
Gunda Corporation
mgovindu@gundacorp.com



Industry Coordinator

Janna McKhann
NexTech Systems, Inc.
nextech@cox.net



Legislative Analyst

Tyler Lindberg
Iteris, Inc.
tjl@iteris.com



FTA/FHWA Liaison

Lawrence (Jesse) Glazer
FHWA/FTA LA Metro Office
Jesse.Glazer@dot.gov



Newsletter Editors

David Schwegel
US High Speed Rail Assoc
davidmschwegel1@gmail.com



Bryan Elenes
Advantec Consulting Engineers, Inc.
Belenes@advantec-usa.com



Professional Activities Chairs

Hassan Ahmed
Kittelson & Associates, Inc.
hahmed@kittelson.com



Nora Chin
LA DOT
nora.chin@lacity.org



Scribes

Jonathan Delgado
Advantec Consulting Engineers, Inc.
Jdelgado@advantec-usa.com



Sandhya Perumalla
Stantec Consulting
Sandhya.Perumalla@stantec.com



Bryan Luong
Michael Baker International
Bryan.Luong@mbakerintl.com



Section Administrator

Erik Zandvliet
City of Manhattan Beach
ezandvliet@citymb.info



Student Chapter Liaisons

Saly Heng
Berg & Associates, Inc.
sheng@lawa.org



Kaylinn Pell
LA DOT
kaylinn.pell@lacity.org



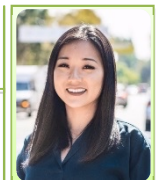
Technical Coordinator

Jason Xu
Iteris, Inc.
jxu@iteris.com

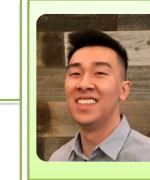


Social Media Administrator Chairs

Ashley Kim
SFMTA
ashley.kim@sfmta.com



Kenny Pham
Stantec Consulting
kenny.pham@stantec.com



Scribe Report

Bryan Luong (Michael Baker Int'l)

The ITE SoCal 2019 Annual Summer Mixer (formerly known as the Steak Fry) was held on Wednesday, August 14, 2019 at the Police Academy Rock Garden in Los Angeles. Over 25 industry friends and colleagues from the public and private sectors were in attendance to network over food and drinks. Since this was our first event for the 2019-2020 year, the ITE SoCal Board was introduced, followed by the announcements for the ITE Western District Meeting in Hawaii and Sponsorship Packages for ITE SoCal. The next ITE SoCal Meeting takes place Wednesday, September 18 at Luminarias Restaurant from 11:30 am to 1:00 pm. The topic is Metro’s Capital Projects as part of Measures R and M. The speaker is Tim Lindholm, LA Metro Senior Executive Officer.



Attendees at the Summer Mixer at the LA Police Academy (Photo Credit: Bryan Luong, August 14, 2019)

Installation of SoCal Section Officers



Officers Dina Saleh, Ed Alegre, Sowmya Chandrasekhar, Josh McNeill, Marc Violette, and Jay Dinkins (left to right) are Installed by Zaki Mustafa (not pictured) at the Annual Meeting at Luminarias Restaurant (Photo Credit: David Schwegel, June 19, 2019)

Southern California Section Wins Section/Chapter Activities Award from ITE

Marianne Saglam (ITE)

Austin, TX—The ITE Southern California Section won the Section/Chapter Activities Award from the Institute of Transportation Engineers (ITE) at the Joint ITE International and Texas District Annual Meeting and Exhibit held last month in Austin, TX, USA.

Initiated in 1992, the Section/Chapter Activities Award is designed to encourage and promote active involvement by ITE sections and chapters in activities promoting the purpose and objectives of ITE. It recognizes the overall quality of section activities, be they technical or non-technical in nature, and may include meetings, committees, reports, seminars and training programs, student participation, career guidance, membership campaigns, and public relations activities.

The Institute of Transportation Engineers (ITE) is an international membership association of transportation professionals who work to improve safety and mobility for all transportation system users and help build smart and livable communities. Through its products and services, ITE promotes professional development and career advancement for its members, supports and encourages education, identifies necessary research, develops technical resources including standards and recommended practices, develops public awareness programs, and serves as a conduit for the exchange of professional information. ITE develops the next generation of transportation professionals through its K-12 STEM program and its more than 150 student chapters.

Founded in 1930, ITE is a community of transportation professionals including, transportation engineers, transportation planners, consultants, educators, technologists, and researchers. Through meetings, seminars, publications, and a network of nearly 16,000 members working in more than 90 countries, ITE connects you to a world of ideas, people, and

resources. For more information, visit www.ite.org.



Section Officers, Ed Alegre and Sowmya Chandrasekhar with International President, Bruce Belmore. (Photo Credit: ITE International, July 22, 2019)

Addressing 9 Grand Transportation Challenges in the West

David M. Schwegel, PE (US High Speed Rail Assoc)

Pacific Northwest: King County Metro opened a Transit Tunnel beneath Seattle in the early 90's to accommodate buses and Link Light Rail (2008 debut). Voters approved a \$54 billion expansion to Link Light Rail in 2016. In July 2019, WSP released a Feasibility Study to connect Portland (10th), Seattle (6th), and Vancouver BC (4th worst traffic in North America) with High-Speed Rail www.ushsr.com/events/seattle2019.html.



A Sound Transit Link Light Rail Train departs from the International District Station in Downtown Seattle (Photo Credit: David Schwegel, February 6, 2019)

Sacramento: Significant traction has been made at improving the region's economy over the past 6 months with major housing projects finally under construction following decades of stagnation. HOV Lanes on I-5 between downtown and Elk Grove, Light Rail System expansions and upgrades to rolling stock (original cars from 1987 still running today), a Streetcar Project, Altamont Corridor Express (ACE) passenger rail service to Midtown and the Airport (SMF), and construction on the nation's largest downtown TOD project are also underway, thanks in large part to SB1.

San Francisco: After months of closure, the Salesforce Transit Center (STC) has finally reopened. Phase 2 will include a tunnel to bring electrified Caltrain and High-Speed Rail into the STC. The City faces significant equity issues that have led to escalating crime.

San Jose: Mayor Sam Liccardo met with Civil Engineers on Friday, August 16th to discuss the City's grand challenges of housing, equity, and climate change. Once BART, the People Mover to the Airport (SJC), and High-Speed Rail come online, Diridon Station is expected to surpass the STC to become North America's Largest Multi-modal Center.

Gilroy to Las Banos: The two cities are only 48 miles apart and separated by mountainous terrain. The implementation of High-Speed Rail joins California's two "polar opposite" housing markets.

Fresno: Renovating the numerous empty downtown historic buildings (date back to Great Depression era) to multi-family housing will bring economic stimulation to the newly renovated Fulton Mall and high ridership for High-Speed Rail.

Las Vegas to Southern California: Modeled after the successful Brightline Project in Florida with a focus on providing a quality travel experience for passengers, Virgin Trains plans to begin construction on the 150-mph passenger rail system between Las Vegas and Southern California in 2020 with a projected completion in 2022. This was the nation's first High-Speed Rail project to achieve environmental clearance. Right of way acquisition was surprisingly easy for this system that runs along I-15 in stark contrast to

the challenging right of way acquisition activities within the Central Valley.

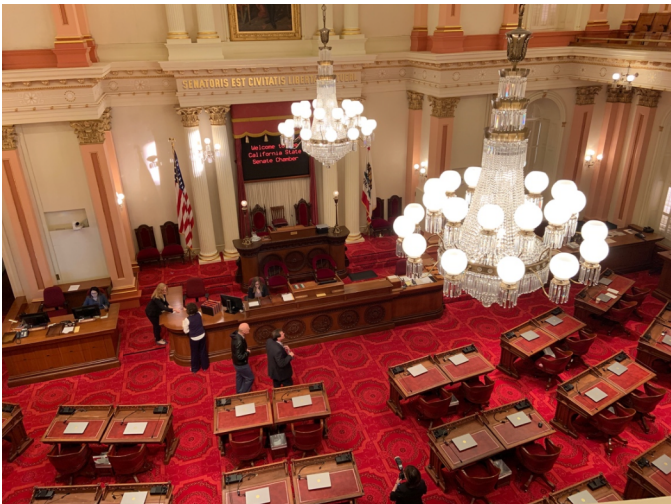
Los Angeles: Progress continues on Mayor Eric Garcetti's 28 transit projects for the 2028 Summer Olympics. However, Tokyo (2020) and Paris (2024) are both significant High-Speed Rail hubs. Should Los Angeles fail to join these ranks, it could pose a potentially embarrassing situation for our nation that has been unsuccessful at winning an Olympics since 2002 and is also highly regarded by much of the rest of the industrialized world as unfriendly toward addressing climate change.

San Ysidro Border Crossing: This international crossing is the world's busiest land border crossing. The implementation of a multi-modal transportation solution is currently underway.

September 2019 Legislative Analysis

Tyler Lindberg (Iteris)

The following transportation related bills are currently active in the Legislature:



Inside the Senate Chambers in the Capitol (Photo Credit: David Schwegel, March 14, 2019)

- SB-127 (Wiener): This bill was formerly written to establish a Division of Active Transportation within the Department of Transportation; but has been "watered down" to no longer include this mandate. The bill would instead distribute the responsibilities for implementing safe and connected facilities for pedestrian, bicyclists, and transit users throughout the California Transportation Commission (CTC). (Status: Active Bill – In Floor Process; last amended September 3rd)
- SB-87/AB-87 (Committee on Budget): This act amends, adds, and repeals a host of various sections of the Government Code, Revenue and Taxation Code, and the Vehicle Code relating to transportation, but its most important takeaway for transportation projects within California is arguably a requirement for the CTC to establish a competitive funding program to provide funds for DOT and/or regional transportation planning agencies toward short-line railroad projects. (Status: Approved by Governor and filed with Secretary of State on June 27, 2019)
- SB-59 (Allen): This bill would establish guiding principles related to autonomous vehicles to ensure that their rollout supports state efforts to reduce VMT and GHG emissions and encourage efficient land use. It was amended to include the establishment of the California Council on the Future of Transportation within the CTC to ensure California policy continues to lead on autonomous and connected vehicle technologies. (Status: Active Bill – In Committee Process; amended in Assembly on July 3, 2019)
- AB 1277 (Oberholte): This bill would require any public agency administering a megaproject, defined as a transportation project with total estimated development and construction costs exceeding \$1 billion, to establish a comprehensive risk management plan and a project oversight committee composed of individuals working within and outside of the public agency to monitor project progress until completion to ensure cost effective use of public funds. (Status: Active bill – In Committee Process)
- SJR 5 (Beall): This joint resolution would urge Congress and the President of the United States to work together to enact robust bipartisan federal infrastructure legislation necessary to restore California and other states' crumbling road and freight infrastructure, respond to growing traffic

congestion, increase investment in public transportation, and address the shortfall in the Highway Trust Fund. (Status: Filed with Secretary of State on September 9, 2019). Check out “Washington to Washington”.

For more information on recent transportation legislation in California, go to <https://leginfo.legislature.ca.gov>, select “Bill Information”, and then “Bill Search”. Input any transportation related keywords and select “Search”.

Update from ITE Headquarters
 Marianne Saglam (ITE Communications and Media Senior Director)



Here are key topics covered in the August 28, 2019 issue of *Spotlight*:

- Membership is approaching 16,000 worldwide per the *State of ITE Report*.
- The exhibition hall for the International Meeting in New Orleans August 9-12, 2019 is more than half full. To reserve a booth, email Tima Good at tima.good@theysgroup.com.
- The Cloud Recruiting Virtual Career Fair takes place October 2, 2019.
- ITE Sections and Chapters are invited to submit write-ups (200 words max) and photos (300 dpi or higher) on a community project they have worked on. Submit articles to Pam Goodell at pgoodell@ite.org for consideration for inclusion in Community Corner.
- Check out the ITE Events Calendar for events from neighboring sections while making sure that SoCal Section key events are also included. Email Pam Goodell at pgoodell@ite.org. This is a great way to boost attendance at SoCal events.
- The deadline for Trip Generation data has been extended to September 15th.

- A Call for ITE International Vice President Candidates is currently underway.
- A link to the New IIHS Report on Bicycle Infrastructure Safety Issues is available in *Spotlite*.
- The National Walking Summit takes place in Columbus, Ohio on September 24th.
- TTI’s latest Urban Mobility Report pegs the nation’s annual congestion costs at \$166 billion.

For more information, check your email inbox from ITE, or go to www.ite.org.

Planning Ahead for our Next Four Newsletters

The ITE SoCal Board has opted for bi-monthly newsletters for the 2019-2020 year. This correlates to the following schedule:

Issue	Deadline	Distribution
Oct/Nov	Fri Nov 1	Wed Nov 6
Dec/Jan	Fri Jan 3	Wed Jan 8
Feb/Mar	Fri Feb 28	Wed Mar 4
Apr/May	Fri May 1	Wed May 6

Typically, 300 words and 1 photo fit into 1 column of our Newsletter. More lengthy articles in *ITE Journal* format (3-4 pages, 2 columns, 1500 words, multiple photos) may be uploaded directly to our website www.socalite.org and sent to ITE Headquarters www.ite.org.

SoCal Section Newsletter articles may be emailed to Co-Newsletter Editors Bryan Elenes (belenes@advantec-usa.com) and David Schwegel (davidmschwegel@gmail.com) by 11:59 pm on the deadline dates above.

For more lengthy articles in *ITE Journal* format, feel free to coordinate with David, so he can loop in the SoCal Social Media Chairs and International Staff.

Thank you in advance for your valuable contributions to our SoCal Section.



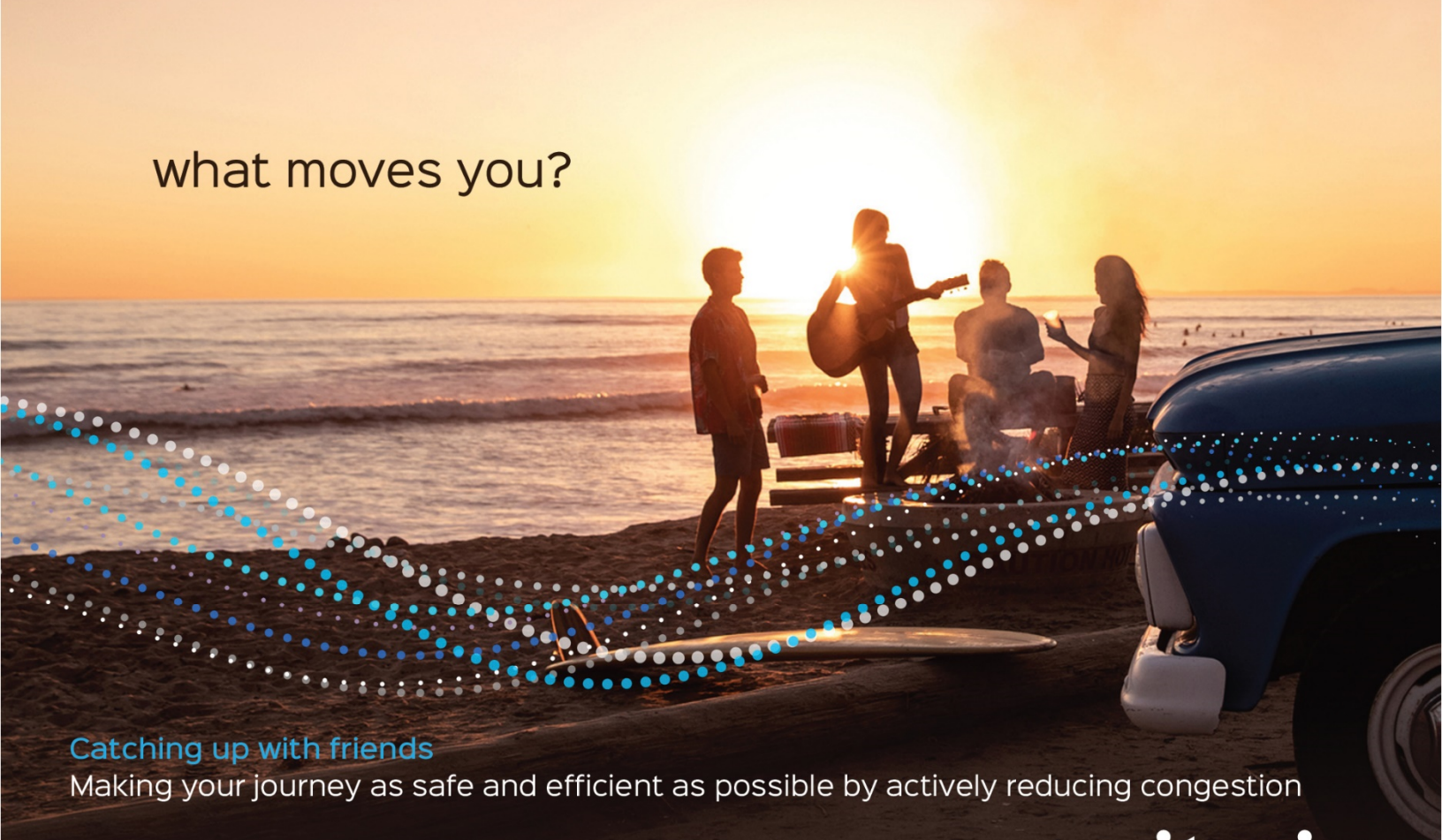
EtherWAN

**WE'RE HERE
TO HELP.**



714.779.3800 | www.EtherWAN.com

what moves you?



Catching up with friends

Making your journey as safe and efficient as possible by actively reducing congestion

iteris.com/whatmovesyou

iteris[®]

Irvine
Diamond Bar
Los Angeles
Oakland
Ontario
Coachella Valley
Palmdale
San Jose
Seattle
Hong Kong



ADVANTEC
CONSULTING ENGINEERS

- INTELLIGENT TRANSPORTATION SYSTEMS
- CONNECTED/AUTONOMOUS VEHICLES
- SMART CITIES
- MOBILITY-AS-A-SERVICE (MAAS)
- TRAFFIC ENGINEERING
- TRAFFIC OPERATIONS
- SYSTEMS AND NETWORK ENGINEERING/MAINTENANCE
- ACTIVE TRANSPORTATION
- HIGHWAY PLANNING & ENGINEERING
- PUBLIC WORKS
- CONSTRUCTION MANAGEMENT & INSPECTION

AN SBE/DBE FIRM

**BECAUSE
WE
CARE**

Providing innovative multimodal planning, engineering and technology solutions for our clients and the public we serve, since 1998.

For more information, please email info@advantec-usa.com or visit www.advantec-usa.com

Headquarters Office:
949-861-4999
1200 Roosevelt,
Irvine, CA 92620



SPONSORSHIP OPTIONS (2019-2020)

SPONSORSHIP PACKAGES			
DIAMOND PACKAGE [#]	PLATINUM PACKAGE [#]	GOLD PACKAGE [#]	SILVER PACKAGE [#]
<ul style="list-style-type: none"> Two (2) sponsorships available (1 consultant, 1 vendor) Sponsorship and logo placement of EVERY email sent by ITE SoCal (minimum of 2 emails per month) Four (4) event tickets to use throughout the year (lunch, workshop, or holiday mixer) Special recognition at Holiday Mixer 	Newsletter Advertisements <ul style="list-style-type: none"> One full page ad Three half page ads 	Newsletter Advertisements <ul style="list-style-type: none"> Two half page ads OR one full page ad 	Newsletter Advertisement <ul style="list-style-type: none"> One half page ad
	Luncheon/Workshop Sponsor* <ul style="list-style-type: none"> Display table 2 tickets for Luncheons (\$60) OR 1 ticket for Workshops (\$45 - \$75) 4 minute presentation during luncheon/workshop Recognition in the event flyer, organization newsletters, and website 	Luncheon/Workshop Sponsor* <ul style="list-style-type: none"> Display table 2 tickets for Luncheons (\$60) OR 1 ticket for Workshops (\$45 - \$75) 4 minute presentation during luncheon/workshop Recognition in the event flyer, organization newsletters, and website 	Luncheon/Workshop Sponsor* <ul style="list-style-type: none"> Display table 2 tickets for Luncheons (\$60) OR 1 ticket for Workshops (\$45 - \$75) 4 minute presentation during luncheon/workshop Recognition in the event flyer, organization newsletters, and website
PACKAGE PRICE \$3,000	PACKAGE PRICE \$1,500	PACKAGE PRICE \$850	PACKAGE PRICE \$650

[#] In addition, the package sponsors get their company logo (clickable) posted on our website for the entire year.

*Price is for one of our six monthly regular meetings, August Summer Mixer, or one of our two workshops.

Pricing for Holiday Mixer/Student Chapter Night is not included in the package and is provided separately below.

ITE SoCal Section issues six (6) newsletters in the months of September, November, January, March, May, and July.

HOLIDAY MIXER SPONSORSHIPS			
	PLATINUM LEVEL	GOLD LEVEL	SILVER LEVEL
Holiday Mixer Knott's Berry Farm Hotel December 4, 2019 4:30pm to 8:30pm	<ul style="list-style-type: none"> 4 event tickets (\$80) Company Logo displayed at event entrance Recognition at the event as the Platinum sponsor Recognition in the event flyer, organization newsletters and website 5 minute presentation at the event 	<ul style="list-style-type: none"> 3 Event tickets (\$60) Sponsorship of either a roulette table or craps table, or food station/bar with Company Logo Recognition at the event as the Gold sponsor Recognition in the event flyer, organization newsletters and website 	<ul style="list-style-type: none"> 1 Event ticket (\$20) Sponsorship of black jack table or photo booth with Company Logo Recognition at the event as the Silver sponsor Recognition in the event flyer, organization newsletters and website
	EARLY BIRD PRICE** \$900	EARLY BIRD PRICE** \$450	EARLY BIRD PRICE** \$225

**Prices shown reflect a 10% Discount if purchased by September 30, 2019.

STUDENT NIGHT BOOTH SPONSORSHIP
<i>Knott's Berry Farm Hotel, May 20, 2020 5:30pm to 6:30pm (tentative)</i>
Booth space and table for annual student night to network with potential future employees \$200

NEWSLETTER VOLUME DISCOUNTS			
	Base Price ^{##}	Two Newsletters ^{##}	Three Newsletters or more ^{##}
Full Page Ad	\$500	\$475	\$450
Half Page Ad	\$250	\$240	\$225

^{##} Pricing is PER NEWSLETTER; ITE SoCal Section issues six (6) newsletters in the months of September, November, January, March, May, and July.

To pay with credit card, you can use Eventbrite (fees apply):

https://ite_2019_2020_sponsorship.eventbrite.com

2019-2020 CALENDAR

INSTITUTE OF TRANSPORTATION ENGINEERS
SOUTHERN CALIFORNIA SECTION



<p>AUGUST 2019</p> <p>ITE Annual Summer Mixer Wed. Aug 14, 2019 Event – 5:30 PM</p> <p>Police Academy Rock Garden, Los Angeles</p>	<p>SEPTEMBER 2019</p> <p>Regular ITE Meeting Wed. Sept 18, 2019 Lunch – 11:30 AM</p> <p>Luminarias Restaurant, Monterey Park</p>	<p>OCTOBER 2019</p> <p>Joint Meeting with OCTEC Thurs. Oct 24, 2019 Lunch – 11:30 AM</p> <p>Orange County Mining Company, Orange</p>
<p>NOVEMBER 2019</p> <p>Joint Meeting with Riverside- San Bernardino Section Wed. Nov 13, 2019 Lunch – 11:30 AM</p> <p>The Restaurant at Kellogg Ranch, Cal Poly Pomona</p>	<p>DECEMBER 2019</p> <p>Holiday Mixer with RSBITE & OCTEC Wed. Dec 4, 2019 Appetizers – 5:00 PM</p> <p>Knotts Berry Farm Hotel, Buena Park</p>	
<p>JANUARY 2020</p> <p>Joint Meeting with City Traffic Engineers Wed. Jan 22, 2020 Lunch – 11:30 AM</p> <p>Luminarias Restaurant, Monterey Park</p>	<p>FEBRUARY 2020</p> <p>Joint Meeting with Central Coast Section Wed. Feb 12, 2020 Lunch – 11:30 AM</p> <p>Location TBD</p>	<p>MARCH 2020</p> <p>Joint Meeting with RSBITE/San Diego Sections Fri. March 13, 2020 Workshop – 9:00 AM – 1:00 PM Lunch – 12:00 PM</p> <p>Plaza de Magdalena San Juan Capistrano</p>
<p>APRIL 2020</p> <p>Regular ITE Meeting Wed. April 15, 2020 Lunch – 11:30 AM</p> <p>Luminarias Restaurant, Monterey Park</p>	<p>MAY 2020</p> <p>Student Chapter Night Co-sponsored by OCTEC Wed. May 20, 2020 5:30 PM Student Job Fair, 6:30 PM Dinner</p> <p>Knott's Berry Farm Resort Hotel, Buena Park</p>	<p>JUNE 2020</p> <p>Mini-Workshop/Annual Business & Joint Meeting with ITS-CA Wed. June 17, 2020 8:30 AM – 12:00 PM Workshop, 12:00 PM Lunch, 1:00 PM Business</p> <p>Luminarias Restaurant, Monterey Park</p>

NOTE: Locations and information is subject to change. Last Updated – September 5, 2019.



September Meeting

**September 18, 2019
11:30AM to 1:00PM**

**Luminarias Restaurant
3500 W. Ramona Blvd
Monterey Park, CA 91754**

**Presenter:
Tim Lindholm,
Senior Executive Office, LA Metro**

**“Overview of Metro’s Capital Projects
as Part of Measure R and M”**

REGISTRATION ENDS ON SEPTEMBER 16, 2019 AT 5:00PM.

Registration through Eventbrite:

https://sept_2019_ite_meeting.eventbrite.com

**Member Registration \$30 | Non-Member Registration \$35 |
Public Agency Member \$25 | Students \$20**

For Questions, please contact:

Dina Saleh

Secretary, ITE SoCal Section

SalehD@metro.net

Lunch is Sponsored By:

